



ACCESS STATEMENT

This access statement does not contain personal opinions as to our suitability for those with access needs, but aims to accurately describe the facilities and services that we offer all our guests/visitors

Access Statement for Leonardo Hotel Edinburgh Murrayfield

Introduction

Located in Clermiston a 12-minute drive to the Murrayfield stadium and a 30-minute drive to the town centre.

The Hotel offers 111 bedrooms - Ranging from Standard double rooms, twin rooms, family rooms, superior rooms and executive suites, ranging across our 5 floors there is something for everyone.

Each room features our Leonardo dream bed, Tea Tray and a luxurious en-suite bathroom and free Wi-Fi. Whether you choose a Standard double room or one of our luxurious executive suites, you will find everything you need for a relaxing stay.

As well as our bedrooms the hotel also offers - 7 conference and meeting rooms across the ground floor, first floor and lower ground floor. Therefore if you are looking for a small meeting rooms or a large space for your meeting or event up to 250 Pax, we can accommodate your needs here at Leonardo Edinburgh Murrayfield.

The hotel has one guest lift that accesses our first and second floor. The lift does not go to lower ground nor does it go to our third floor. However, there will always be team on hand to assist with luggage when needed.

HOTEL SERVICES

Wi-Fi access is complementary throughout the hotel. The network name is “Leonardo Hotel Guest Wi-Fi” and a sign in page will appear, simply enter in your email address to connect.

Housekeeping All our rooms are serviced daily. If you don't require service, please inform reception team that will share your request with our housekeeping team. Rooms will only be part cleaned if personal items or clothing are left around the room, beds will also only be made up if this is clear of any personal items or clothing.

Juvenate Leisure Club is located within the hotel and is completely free for you to use. Access is from a separate entrance in the basement with an accessible ramp into the club. Towels are provided for you at the club – just bring £1 coin to use a locker. From reception, take the stairs next to the lift and follow the signs for Juvenate Health and Fitness. You will find a swimming pool, sauna, steam room and gym.

A selection of classes is available to participate in. Please contact leisure club team to book you in for these. You can contact Juvenate directly from your room by calling 2263.

Breakfast By far the most important meal of the day and is available each morning from the Westview Restaurant. If you do not have this included in your room rate, please see reception for a discounted breakfast voucher (£14.95) to be requested on the day before or you can always add on the day for £16.95. The Bar & Grill is open for Bar Food, from 12:00 pm until 9.30pm and offers a contemporary style menu. The restaurant has four steps up to the main floor from the bar there is a chair lift also up to the restaurant from the bar which is on the ground floor

Other Amenities Featured amenities include dry cleaning/laundry services, a 24-hour front desk, and luggage storage. Planning an event in Edinburgh? Free self-parking is available onsite (100 parking spaces) Including 4 disabled spaces two outside the main reception and two outside the Leisure Club.

Check out This is 11:00am. Should you wish to stay longer, please let the reception team know and they will be happy to arrange a late check out for an extra £10 per hour (Max of 2 extra hours subject to availability).

ACCESS STATEMENT

Access to City Centre and surroundings

The easiest and cheapest way to get to the city centre is a 20 min journey on the bus. (Bus 26 is the quickest one) To get to the Bus Stop, 3-minute walk - Red and white shelter.

Turn left from the hotel and left again. Single ticket (one way) £2 or £5 the day ticket Note: Tickets are bought on the bus. Correct change is needed, or you can pay by contactless.

We can also request a taxi with our trusted taxi company for any time of the day/location at your request. UBER is also available in the area if it suits you better.

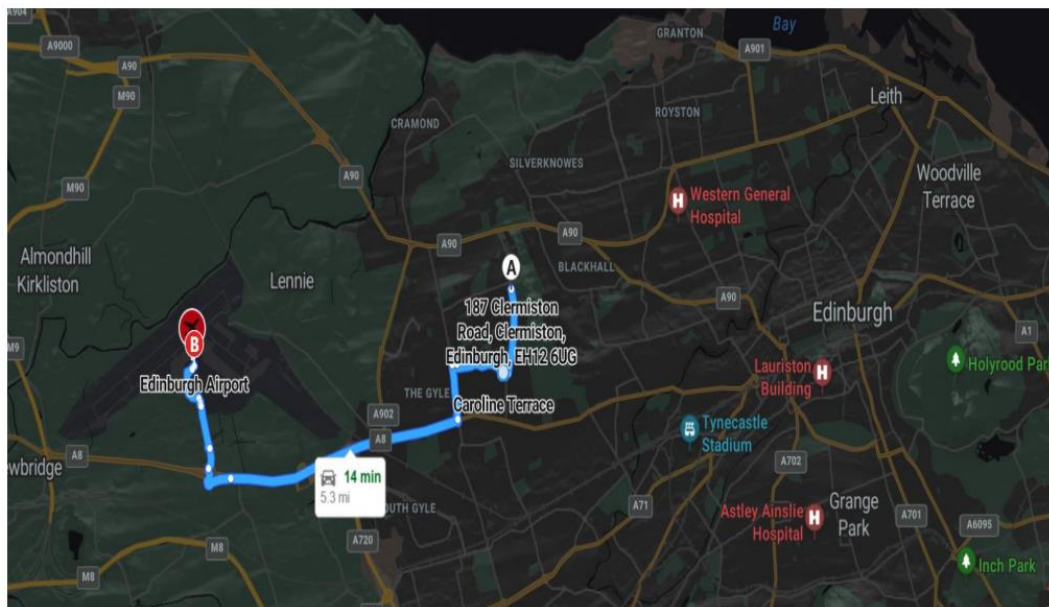
Wheel chair taxis can be ordered. Our reception team is more than happy to help you with any other questions you may have regarding local transportation. To contact reception from your room please press the 'Reception' button on your phone.

Access from the Airport Public Transport

Bus 200 has a stop right next to the hotel please see reception for exact details.

Driving

15 minutes journey, the coordinates for 187 Clermiston Crescent are approximately 55.9425° N latitude and 3.2794° W longitude.



- Well-connected via the M8 and M90 motorways. Whether you're a city tourist, business traveller, or a family on holiday, Leonardo Hotel Edinburgh Murrayfield provides a comfortable stay in the quieter, calmer suburbs of Edinburgh

ACCESS STATEMENT

ENTRANCES



There are 3 points of access for entrance to the hotel. One is situated on the main entrance of the building heading to reception. This entrance is fully accessible. The second point of access is located other on the right-hand side of the main entrance stairs only, used commonly for direct and separate access to and from events/conferences and in the back directly from our Leisure club, also with access by ramp.

Once inside the hotel, the reception area is to the left-hand side of the lobby. A cosy welcome lounge with sofas and a place to relax while you wait for your rooms is available.

The Off the shelf shop for your drinks & snacks. As well as some occasional and handy items like toothpaste, toothbrush, sanitary items, etc. is also located in the reception area

Stair access to each floor is located on the left as you enter reception. Lift access to Ground, 1st and second floor is available. Please note the lift does not reach the 3rd floor or the lower ground floor.

The lift also does not provide access to the leisure club and 3 small lower ground meeting rooms. however, the leisure club is fully accessible via the ramp going into leisure main entrance.

Going forward you'll find a very modern and accommodating bar area where you can enjoy a lovely meal or just a hot or cold drink. The Restaurant is located up a few steps where you will enjoy our Scottish buffet breakfast.

ACCESS STATEMENT

Bedrooms

With 111 bedrooms we have something for everyone ranging from –

Standard Double rooms - Suitable for 2 adults Free WIFI, Iron and ironing board, Flat screen TV, Tea & coffee refreshment tray, Spacious well-lit workspaces, Ensuite with complimentary toiletries, Hairdryer.

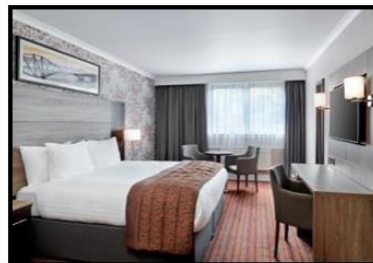
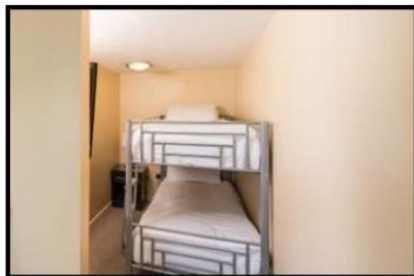
Twin rooms - Suitable for 2 adults Free WIFI, Iron and ironing board, Flat screen TV, Tea & coffee refreshment tray, Spacious well-lit workspaces, Ensuite with complimentary toiletries, Hairdryer.

Superior with sofa - Suitable for up to 2 adults and 2 children Free WIFI, Iron and ironing board, Flat screen TV, Tea & coffee refreshment tray, Spacious well-lit workspaces, Ensuite with complimentary toiletries, Hairdryer.

Executive - Suitable for 2 adults Free WIFI, Iron and ironing board, Flat screen TV, Tea & coffee refreshment tray, Spacious well-lit workspaces, Ensuite with complimentary toiletries, Hairdryer, robes, slippers, espresso machine.

Family rooms (double room with bunk beds) Suitable for 2 adults & 2 children Free WIFI, Iron and ironing board, Flat screen TV, Tea & coffee refreshment tray, Spacious well-lit workspaces, Ensuite with complimentary toiletries, Hairdryer.

Triple rooms - Suitable for 3 adults Free WIFI, Iron and ironing board, Flat screen TV, Tea & coffee refreshment tray, Spacious well-lit workspaces, Ensuite with complimentary toiletries, Hairdryer.



ACCESS STATEMENT

Accessible Bedrooms

Located right next to reception we have 4 accessible rooms. 2 double rooms and 2 twin rooms, one with bath and the other with a walk-in shower.

All of them with an emergency pull cord in the bathroom which discretely alerts our team that assistance has been requested.

Conference & Events Rooms

Business travellers looking for a conference room or a meeting room in Edinburgh will find everything they need at Leonardo Hotel Edinburgh Murrayfield, a stylish business hotel with seven large suites with capacity for up to 260 guests. We're also a very renown wedding venue.

From small intimate conference rooms to large conference area, providing tea, coffee and a range of options for snacks and lunch we have something for everyone. All of our ground floor and upper floor conference rooms are fully accessible.



ACCESS STATEMENT

Accreditations

Leonardo Hotel Edinburgh Murrayfield is dedicated to positively working towards being sustainable. We are proud to have been recognised by the Green Business Tourism Scheme and have recently been awarded the Silver Award in Green Tourism.



Assistance Dogs

Assistance Dogs We welcome trained assistance dogs at all of our Leonardo Hotels across the UK and Ireland, in line with the Equality Act 2010 (UK) and the Disability Act 2005 (Ireland). Guests with assistance dogs are welcome to stay in all of our hotels and visit all public areas, including meeting and events, restaurants, and bars. Our team is trained to support guests with assistance dogs, ensuring a comfortable and accessible stay. If you have specific needs or require any adjustments during your stay, please contact the hotel in advance so we can make the necessary arrangements